

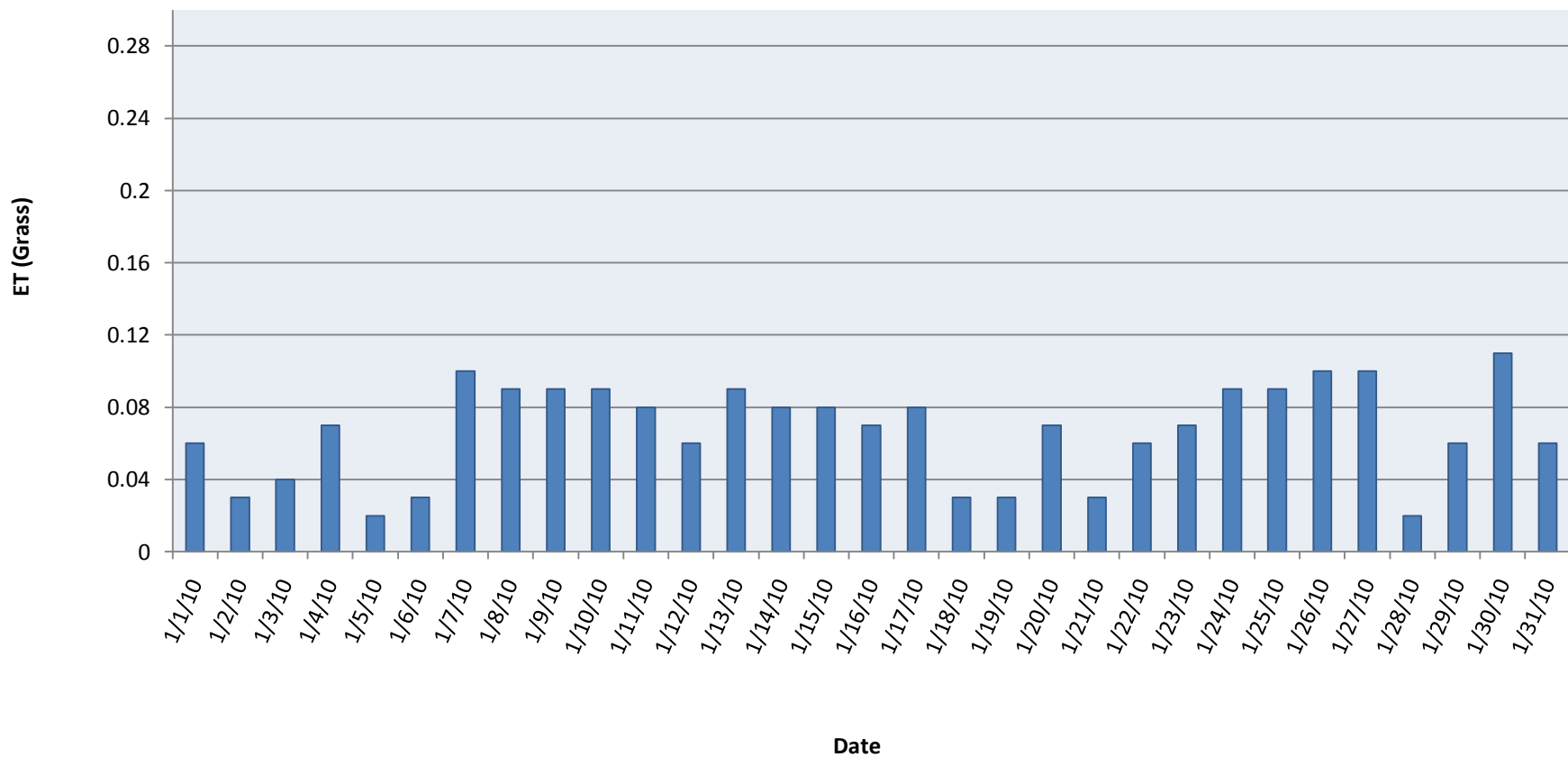
Equus Beds Groundwater Management District No. 2

N. Reno County Weather Station #1086

JANUARY	Max Air Temp (°F)	Min Air Temp (°F)	Total Precip (in)	Avg RH (%)	Avg Wind Speed (mph)	Solar Radiation (langley)	ET (grass) (in)	Max 2" Soil Temp (°F)	Min 2" Soil Temp (°F)	Max 4" Soil Temp (°F)	Min 4" Soil Temp (°F)	Max RH (%)	Min RH (%)	Max Wind Speed (mph)	Wind Vector Speed (mph)	Vector Direction (°)
1/1/2010	27.7	11.3	0	85.5	6.07	206.5	0.06	0	0	0	0	0	0	12.96	0	0
1/2/2010	17.9	7.3	0	79.9	4.82	92.9	0.03	0	0	0	0	0	0	9.99	0	0
1/3/2010	19.2	11	0	88.6	4.67	134.2	0.04	0	0	0	0	0	0	9.99	0	0
1/4/2010	27.8	12.1	0.01	83.4	3.02	223	0.07	0	0	0	0	0	0	7.82	0	0
1/5/2010	24.8	17.4	0	92.4	5.71	70.2	0.02	0	0	0	0	0	0	10.79	0	0
1/6/2010	30.8	10.8	0	85.5	8	84.7	0.03	0	0	0	0	0	0	20.86	0	0
1/7/2010	12.4	3.2	0	66.8	12.74	307.7	0.1	0	0	0	0	0	0	22.34	0	0
1/8/2010	16.3	-3.4	0	69.6	5.52	301.5	0.09	0	0	0	0	0	0	14.22	0	0
1/9/2010	21.7	-3.7	0	76	2.11	301.5	0.09	0	0	0	0	0	0	6.45	0	0
1/10/2010	43.1	5.4	0	63.1	6.91	285	0.09	0	0	0	0	0	0	17.99	0	0
1/11/2010	48.1	20.6	0	75.6	3.57	278.8	0.08	0	0	0	0	0	0	11.71	0	0
1/12/2010	42.4	19.3	0	92.3	5.09	200.3	0.06	0	0	0	0	0	0	13.99	0	0
1/13/2010	58.8	26.3	0	80.6	8.21	289.1	0.09	0	0	0	0	0	0	19.14	0	0
1/14/2010	49.8	27	0	88.9	2.97	278.8	0.08	0	0	0	0	0	0	9.19	0	0
1/15/2010	48.2	22.7	0	91.1	2.24	266.4	0.08	0	0	0	0	0	0	6.1	0	0
1/16/2010	50.5	24.2	0	92	2.33	237.5	0.07	0	0	0	0	0	0	9.88	0	0
1/17/2010	57.5	23.6	0	86.6	3.52	276.7	0.08	0	0	0	0	0	0	9.53	0	0
1/18/2010	37.2	28.4	0	100	3.32	82.6	0.03	0	0	0	0	0	0	8.28	0	0
1/19/2010	44.5	30.4	0	100	4.06	72.3	0.03	0	0	0	0	0	0	9.42	0	0
1/20/2010	48.9	30	0	93.1	4.69	216.8	0.07	0	0	0	0	0	0	14.8	0	0
1/21/2010	38.6	29.7	0.02	98.9	5.06	99.1	0.03	0	0	0	0	0	0	13.42	0	0
1/22/2010	58.2	30.8	0.02	89.3	9.76	192	0.06	0	0	0	0	0	0	19.14	0	0
1/23/2010	56	37.5	0.04	86.4	7.34	223	0.07	0	0	0	0	0	0	20.51	0	0
1/24/2010	42.3	25.4	0	69.2	8.24	293.2	0.09	0	0	0	0	0	0	24.74	0	0
1/25/2010	40.8	25.9	0	62.6	9.05	301.5	0.09	0	0	0	0	0	0	26	0	0
1/26/2010	42.1	18.9	0	65.3	4.38	313.9	0.1	0	0	0	0	0	0	12.4	0	0
1/27/2010	48.6	27.1	0	67.5	6.4	320.1	0.1	0	0	0	0	0	0	13.99	0	0
1/28/2010	27.6	16.9	0	75.1	7.91	53.7	0.02	0	0	0	0	0	0	16.74	0	0
1/29/2010	19.9	6.8	0	92	7.9	196.2	0.06	0	0	0	0	0	0	16.85	0	0
1/30/2010	29.1	3.4	0.08	89.8	2.05	346.9	0.11	0	0	0	0	0	0	7.36	0	0
1/31/2010	24.9	8.1	0	98.2	4.62	198.2	0.06	0	0	0	0	0	0	12.5	0	0

Equus Beds Groundwater Management District No. 2
N. Reno County Weather Station #1086

Evapotranspiration (ET) in North Reno County
at Weather Station #1086
January 2010



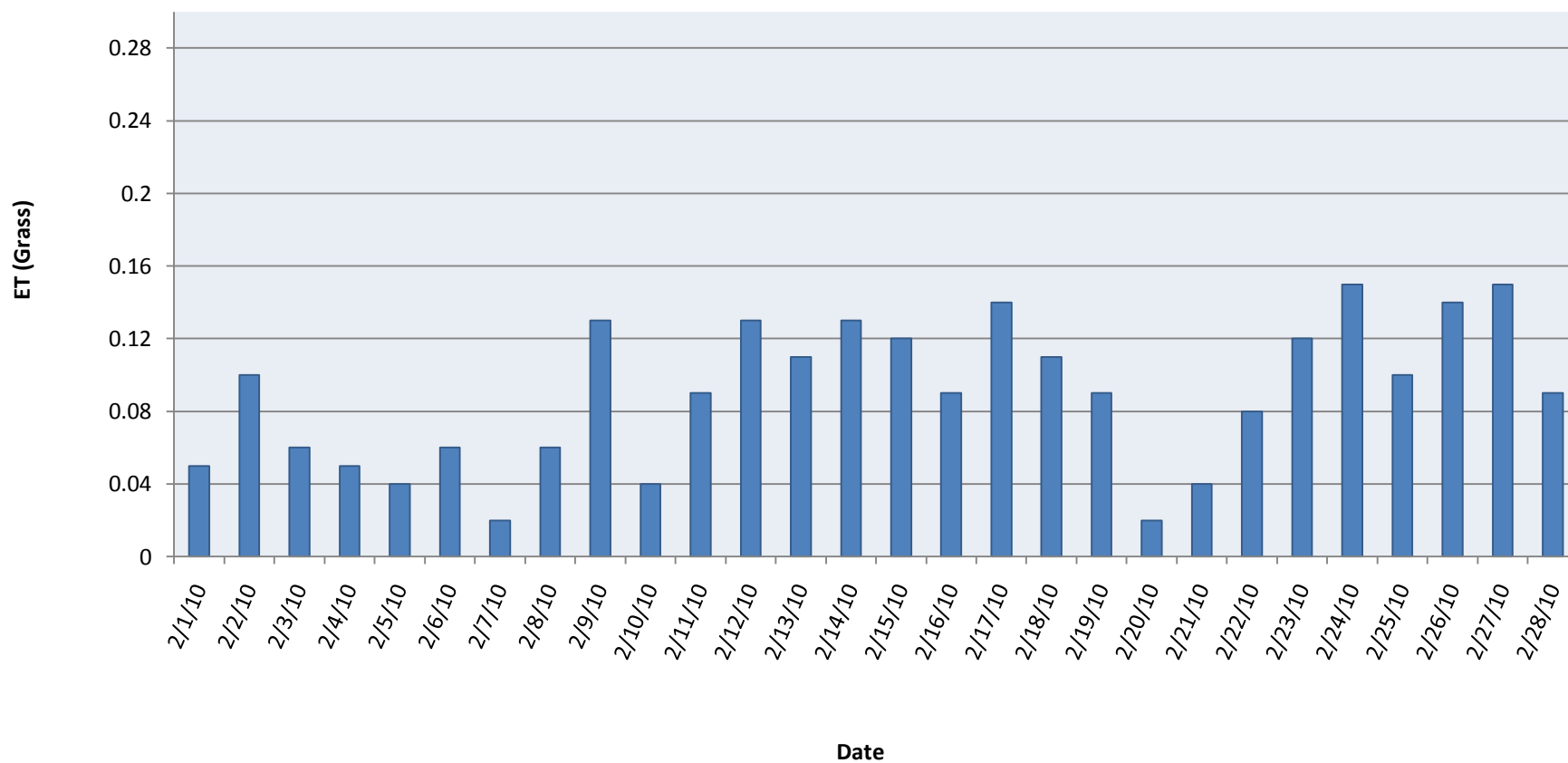
Equus Beds Groundwater Management District No. 2

N. Reno County Weather Station #1086

FEBRUARY	Max Air Temp (°F)	Min Air Temp (°F)	Total Precip (in)	Avg RH (%)	Avg Wind Speed (mph)	Solar Radiation (langley)	ET (grass) (in)	Max 2" Soil Temp (°F)	Min 2" Soil Temp (°F)	Max 4" Soil Temp (°F)	Min 4" Soil Temp (°F)	Max RH (%)	Min RH (%)	Max Wind Speed (mph)	Wind Vector Speed (mph)	Vector Direction (°)
2/1/2010	31.9	23.2	0.01	100	1.7	150.7	0.05	0	0	0	0	0	0	8.85	0	0
2/2/2010	38.9	18.6	0	96.2	1.36	301.5	0.1	0	0	0	0	0	0	6.1	0	0
2/3/2010	36.2	23.8	0	98	5.51	194.1	0.06	0	0	0	0	0	0	12.5	0	0
2/4/2010	34.1	30.2	0.11	100	3.78	140.4	0.05	0	0	0	0	0	0	11.82	0	0
2/5/2010	36.7	30.1	0.02	97	4.34	121.8	0.04	0	0	0	0	0	0	13.53	0	0
2/6/2010	39.1	28.6	0	90.4	2.69	167.3	0.06	0	0	0	0	0	0	9.76	0	0
2/7/2010	34.5	29.8	0	94.7	2.94	55.8	0.02	0	0	0	0	0	0	8.39	0	0
2/8/2010	33	15.4	0	88.2	4.98	171.4	0.06	0	0	0	0	0	0	16.62	0	0
2/9/2010	31.2	14	0	74.9	7.25	386.1	0.13	0	0	0	0	0	0	17.19	0	0
2/10/2010	27.6	12.4	0	88.1	4.27	105.3	0.04	0	0	0	0	0	0	11.47	0	0
2/11/2010	40.9	25.2	0	85.1	5.49	276.7	0.09	0	0	0	0	0	0	11.25	0	0
2/12/2010	46.3	23	0	79.8	3.42	386.1	0.13	0	0	0	0	0	0	9.99	0	0
2/13/2010	55.3	24.2	0	82.4	4.7	338.7	0.11	0	0	0	0	0	0	13.31	0	0
2/14/2010	32.9	21.6	0	63.1	12.85	384.1	0.13	0	0	0	0	0	0	26.91	0	0
2/15/2010	37.5	19.1	0	55.2	9.3	357.2	0.12	0	0	0	0	0	0	21.89	0	0
2/16/2010	35.1	21.3	0	66.6	6.2	293.2	0.09	0	0	0	0	0	0	14.34	0	0
2/17/2010	47.7	17	0	73	2.74	415.1	0.14	0	0	0	0	0	0	8.73	0	0
2/18/2010	55.4	28.8	0	66.4	4.7	324.2	0.11	0	0	0	0	0	0	12.5	0	0
2/19/2010	44.7	28.3	0.01	85.3	6.05	274.6	0.09	0	0	0	0	0	0	13.65	0	0
2/20/2010	31.4	26.3	0	99.3	6.01	51.6	0.02	0	0	0	0	0	0	11.37	0	0
2/21/2010	31.3	23.8	0.14	97.5	0.56	101.2	0.04	0	0	0	0	0	0	10.91	0	0
2/22/2010	28	19.5	0.03	89.2	0.27	245.7	0.08	0	0	0	0	0	0	0.27	0	0
2/23/2010	32.3	15.6	0.06	84.1	0.27	357.2	0.12	0	0	0	0	0	0	0.27	0	0
2/24/2010	38.6	14	0.04	81.7	3.1	435.7	0.15	0	0	0	0	0	0	11.82	0	0
2/25/2010	44.1	23.9	0	70.4	7.55	311.8	0.1	0	0	0	0	0	0	16.4	0	0
2/26/2010	50.7	26.3	0	74.5	2.56	423.3	0.14	0	0	0	0	0	0	9.99	0	0
2/27/2010	46.4	25.6	0	83.6	3.37	435.7	0.15	0	0	0	0	0	0	9.31	0	0
2/28/2010	47.5	28.1	0	74.1	5.65	268.4	0.09	0	0	0	0	0	0	12.96	0	0

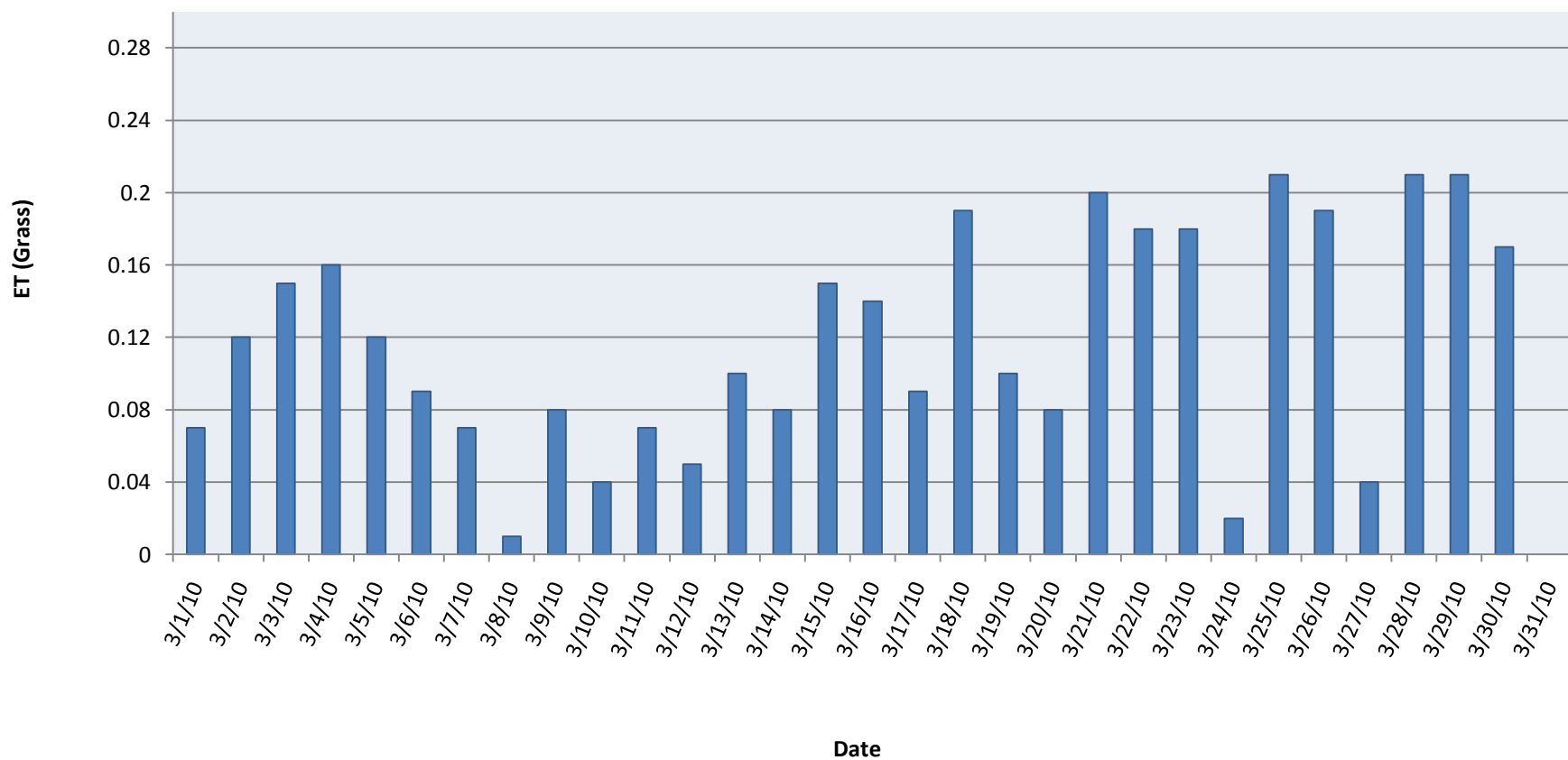
Equus Beds Groundwater Management District No. 2
N. Reno County Weather Station #1086

Evapotranspiration (ET) in North Reno County
at Weather Station #1086
February 2010



Equus Beds Groundwater Management District No. 2
N. Reno County Weather Station #1086

Evapotranspiration (ET) in North Reno County
at Weather Station #1086
March 2010



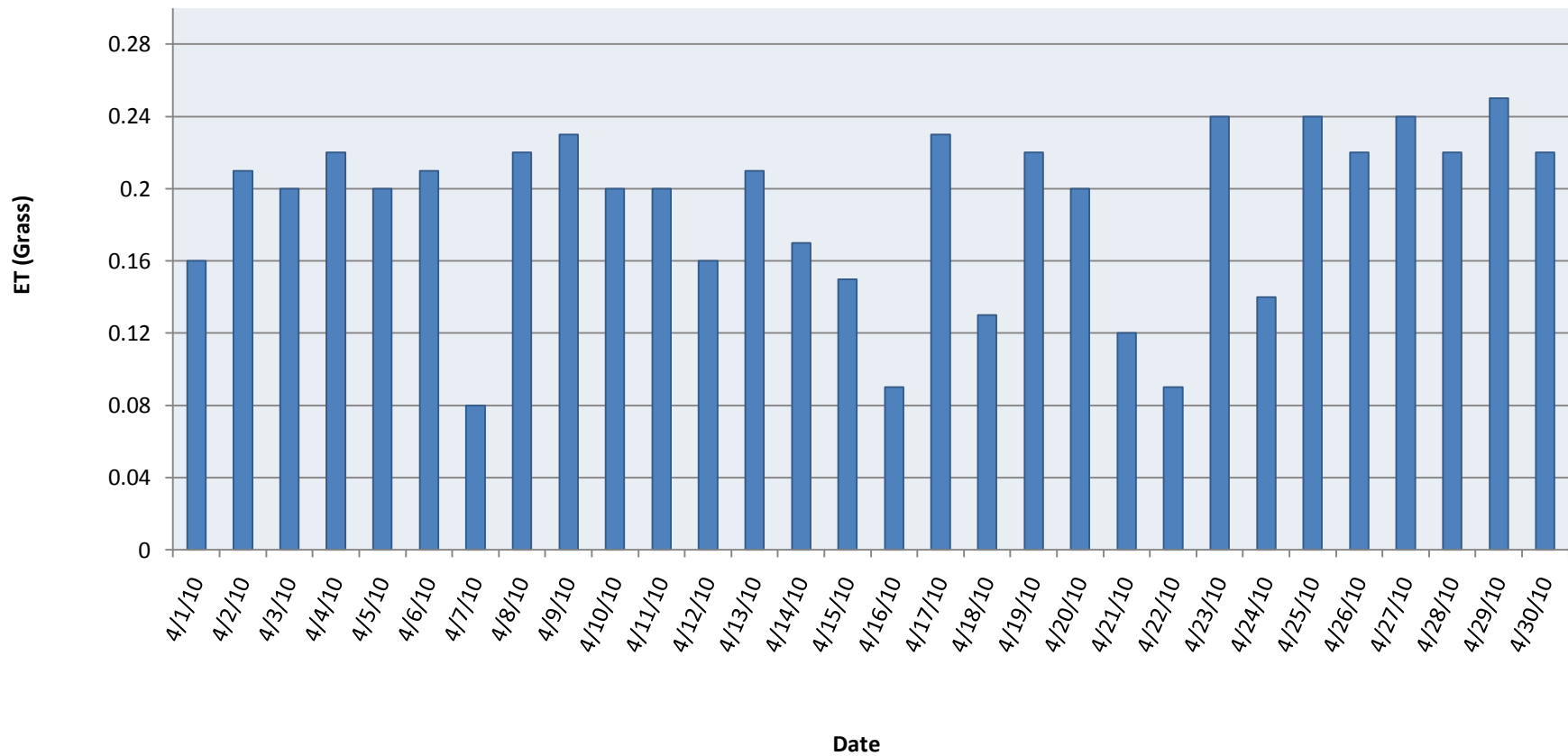
Equus Beds Groundwater Management District No. 2

N. Reno County Weather Station #1086

APRIL	Max Air Temp (°F)	Min Air Temp (°F)	Total Precip (in)	Avg RH (%)	Avg Wind Speed (mph)	Solar Radiation (langley)	ET (grass) (in)	Max 2" Soil Temp (°F)	Min 2" Soil Temp (°F)	Max 4" Soil Temp (°F)	Min 4" Soil Temp (°F)	Max RH (%)	Min RH (%)	Max Wind Speed (mph)	Wind Vector Speed (mph)	Vector Direction (°)
4/1/2010	79	58	0	65.3	13.68	444	0.16	0	0	0	0	0	0	27.14	0	0
4/2/2010	68.5	39.2	0.08	52.3	6.72	580.3	0.21	0	0	0	0	0	0	18.8	0	0
4/3/2010	67.2	28.7	0	59	7.49	565.8	0.2	0	0	0	0	0	0	20.74	0	0
4/4/2010	78	41.5	0	49.3	5.73	603	0.22	0	0	0	0	0	0	17.88	0	0
4/5/2010	89	51.5	0.01	66.8	12.59	559.6	0.2	0	0	0	0	0	0	26.34	0	0
4/6/2010	82.1	45.9	0	59.9	12.11	596.8	0.21	0	0	0	0	0	0	23.94	0	0
4/7/2010	50.7	33.6	0	77.4	7.81	204.4	0.08	0	0	0	0	0	0	22.8	0	0
4/8/2010	64.2	28	0	56	4.54	609.2	0.22	0	0	0	0	0	0	17.31	0	0
4/9/2010	76.7	39.2	0	42.9	10.68	642.2	0.23	0	0	0	0	0	0	25.66	0	0
4/10/2010	76.5	51	0	54.2	9.86	551.3	0.2	0	0	0	0	0	0	18.11	0	0
4/11/2010	75.2	49.3	0	81.8	5.9	547.2	0.2	0	0	0	0	0	0	17.54	0	0
4/12/2010	75.6	55	0	83.2	7.86	460.5	0.16	0	0	0	0	0	0	17.65	0	0
4/13/2010	77.9	56.7	0	62.5	12.1	586.4	0.21	0	0	0	0	0	0	25.54	0	0
4/14/2010	79	58.4	0	60.2	10.71	462.6	0.17	0	0	0	0	0	0	23.02	0	0
4/15/2010	78.7	54	0.01	70.9	8.07	419.2	0.15	0	0	0	0	0	0	19.83	0	0
4/16/2010	62.1	45.6	0.1	85.2	6.64	229.2	0.09	0	0	0	0	0	0	17.99	0	0
4/17/2010	66.5	35.8	0	57.7	4.92	625.7	0.23	0	0	0	0	0	0	13.19	0	0
4/18/2010	61.6	42.1	0	63.6	3.82	357.2	0.13	0	0	0	0	0	0	12.74	0	0
4/19/2010	66.6	42	0	67.6	3.43	613.3	0.22	0	0	0	0	0	0	12.96	0	0
4/20/2010	68.3	41	0	72.5	4.9	545.1	0.2	0	0	0	0	0	0	17.88	0	0
4/21/2010	68.3	53.3	0.01	85.1	3.61	328.3	0.12	0	0	0	0	0	0	8.97	0	0
4/22/2010	68.5	57.2	0.62	96.3	7.1	241.6	0.09	0	0	0	0	0	0	15.37	0	0
4/23/2010	72.7	54.2	0.22	66.5	11.97	636	0.24	0	0	0	0	0	0	25.32	0	0
4/24/2010	67.4	47	0.54	79.2	5.89	375.8	0.14	0	0	0	0	0	0	18.22	0	0
4/25/2010	70.2	50.1	0	68	9.59	652.5	0.24	0	0	0	0	0	0	21.54	0	0
4/26/2010	62	44.1	0	58.9	9.32	590.6	0.22	0	0	0	0	0	0	21.31	0	0
4/27/2010	64.6	37.5	0	63.3	5.04	654.6	0.24	0	0	0	0	0	0	14.45	0	0
4/28/2010	74.8	46.5	0	60.3	14.6	590.6	0.22	0	0	0	0	0	0	29.54	0	0
4/29/2010	83.8	52.7	0.41	65.3	16.75	681.4	0.25	0	0	0	0	0	0	31.94	0	0
4/30/2010	72.2	47.5	0.08	67.6	6.91	580.3	0.22	0	0	0	0	0	0	22.8	0	0

Equus Beds Groundwater Management District No. 2
N. Reno County Weather Station #1086

Evapotranspiration (ET) in North Reno County
at Weather Station #1086
April 2010



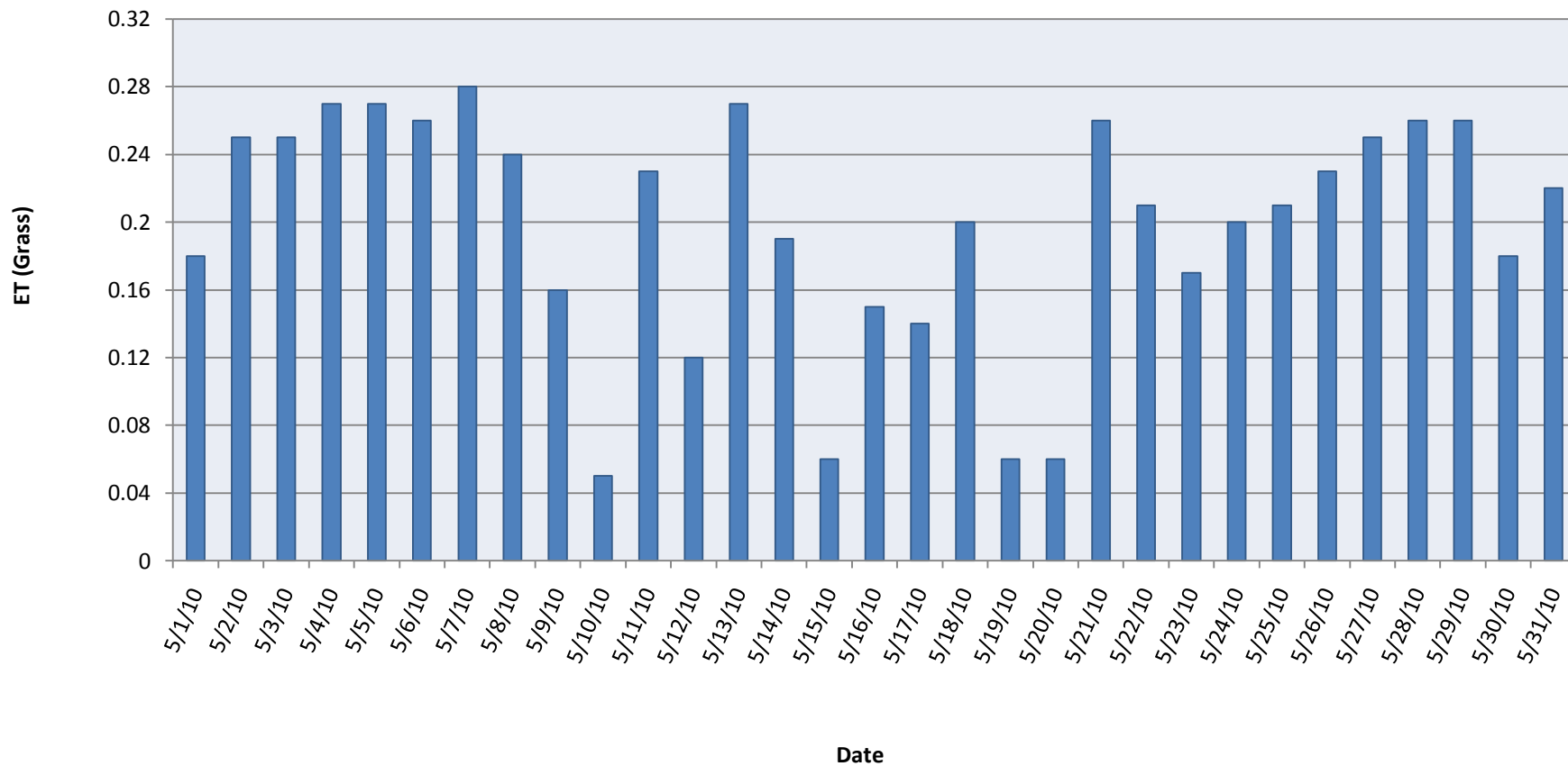
Equus Beds Groundwater Management District No. 2

N. Reno County Weather Station #1086

MAY	Max Air Temp (°F)	Min Air Temp (°F)	Total Precip (in)	Avg RH (%)	Avg Wind Speed (mph)	Solar Radiation (langley)	ET (grass) (in)	Max 2" Soil Temp (°F)	Min 2" Soil Temp (°F)	Max 4" Soil Temp (°F)	Min 4" Soil Temp (°F)	Max RH (%)	Min RH (%)	Max Wind Speed (mph)	Wind Vector Speed (mph)	Vector Direction (°)
5/1/2010	66.2	48.8	0	68.6	3.38	485.3	0.18	0	0	0	0	0	0	12.16	0	0
5/2/2010	73.9	45.8	0.03	65.2	3.18	683.5	0.25	0	0	0	0	0	0	22.91	0	0
5/3/2010	72.9	46.1	0	65.3	3.4	685.6	0.25	0	0	0	0	0	0	12.85	0	0
5/4/2010	84.5	50.2	0	53.7	9.65	722.7	0.27	0	0	0	0	0	0	24.39	0	0
5/5/2010	74.5	50.5	0	42.6	5.43	735.1	0.27	0	0	0	0	0	0	16.85	0	0
5/6/2010	85.8	51.8	0	53.1	8.82	710.3	0.26	0	0	0	0	0	0	19.14	0	0
5/7/2010	70.4	45	0	56.2	10.04	739.3	0.28	0	0	0	0	0	0	22.11	0	0
5/8/2010	63.1	36.3	0	48	4.54	646.3	0.24	0	0	0	0	0	0	12.5	0	0
5/9/2010	65.4	50.3	0	62.3	10.79	410.9	0.16	0	0	0	0	0	0	21.42	0	0
5/10/2010	67	50.8	0.18	96.1	9.07	142.5	0.05	0	0	0	0	0	0	19.48	0	0
5/11/2010	70.3	47.6	0	84.1	7.23	609.2	0.23	0	0	0	0	0	0	15.93	0	0
5/12/2010	83.5	46.9	0.75	94.4	9.38	301.5	0.12	0	0	0	0	0	0	20.86	0	0
5/13/2010	65.9	43.6	0	75.4	5.42	722.7	0.27	0	0	0	0	0	0	21.54	0	0
5/14/2010	66.4	45.3	0	78.1	4.23	532.8	0.19	0	0	0	0	0	0	13.08	0	0
5/15/2010	62.1	53.3	0.05	95.9	5.18	156.9	0.06	0	0	0	0	0	0	11.13	0	0
5/16/2010	70.4	55	0.16	91.2	3.18	404.7	0.15	0	0	0	0	0	0	9.53	0	0
5/17/2010	67.1	53.4	0	86.6	3.8	390.3	0.14	0	0	0	0	0	0	10.91	0	0
5/18/2010	72	47.1	0.05	84.2	4.3	547.2	0.2	0	0	0	0	0	0	11.13	0	0
5/19/2010	64.4	56.2	0.59	97.3	8.46	165.2	0.06	0	0	0	0	0	0	21.99	0	0
5/20/2010	62.7	54.2	0.08	95.9	4.87	152.8	0.06	0	0	0	0	0	0	12.96	0	0
5/21/2010	77.1	51	0	82.6	4.94	714.5	0.26	0	0	0	0	0	0	12.96	0	0
5/22/2010	84.7	67.4	0	85.7	13.74	586.4	0.21	0	0	0	0	0	0	25.08	0	0
5/23/2010	85.7	70.5	0	86.7	10.34	477	0.17	0	0	0	0	0	0	19.02	0	0
5/24/2010	85.5	63.6	0.31	80	11.05	541	0.2	0	0	0	0	0	0	23.14	0	0
5/25/2010	81.4	61	0.62	84.7	4.27	557.5	0.21	0	0	0	0	0	0	14.22	0	0
5/26/2010	82.4	62.8	0.26	82.2	2.67	613.3	0.23	0	0	0	0	0	0	15.71	0	0
5/27/2010	87.9	65.2	0	79.4	2.72	667	0.25	0	0	0	0	0	0	10.79	0	0
5/28/2010	86.9	66	0	76.2	4.15	706.2	0.26	0	0	0	0	0	0	12.5	0	0
5/29/2010	88.2	65.7	0	75.9	5.98	712.4	0.26	0	0	0	0	0	0	14.22	0	0
5/30/2010	83.1	62.8	0	86.7	5.41	481.1	0.18	0	0	0	0	0	0	15.25	0	0
5/31/2010	81.5	58.6	0	82.8	3.49	607.1	0.22	0	0	0	0	0	0	10.91	0	0

Equus Beds Groundwater Management District No. 2
N. Reno County Weather Station #1086

Evapotranspiration (ET) in North Reno County
at Weather Station #1086
May 2010



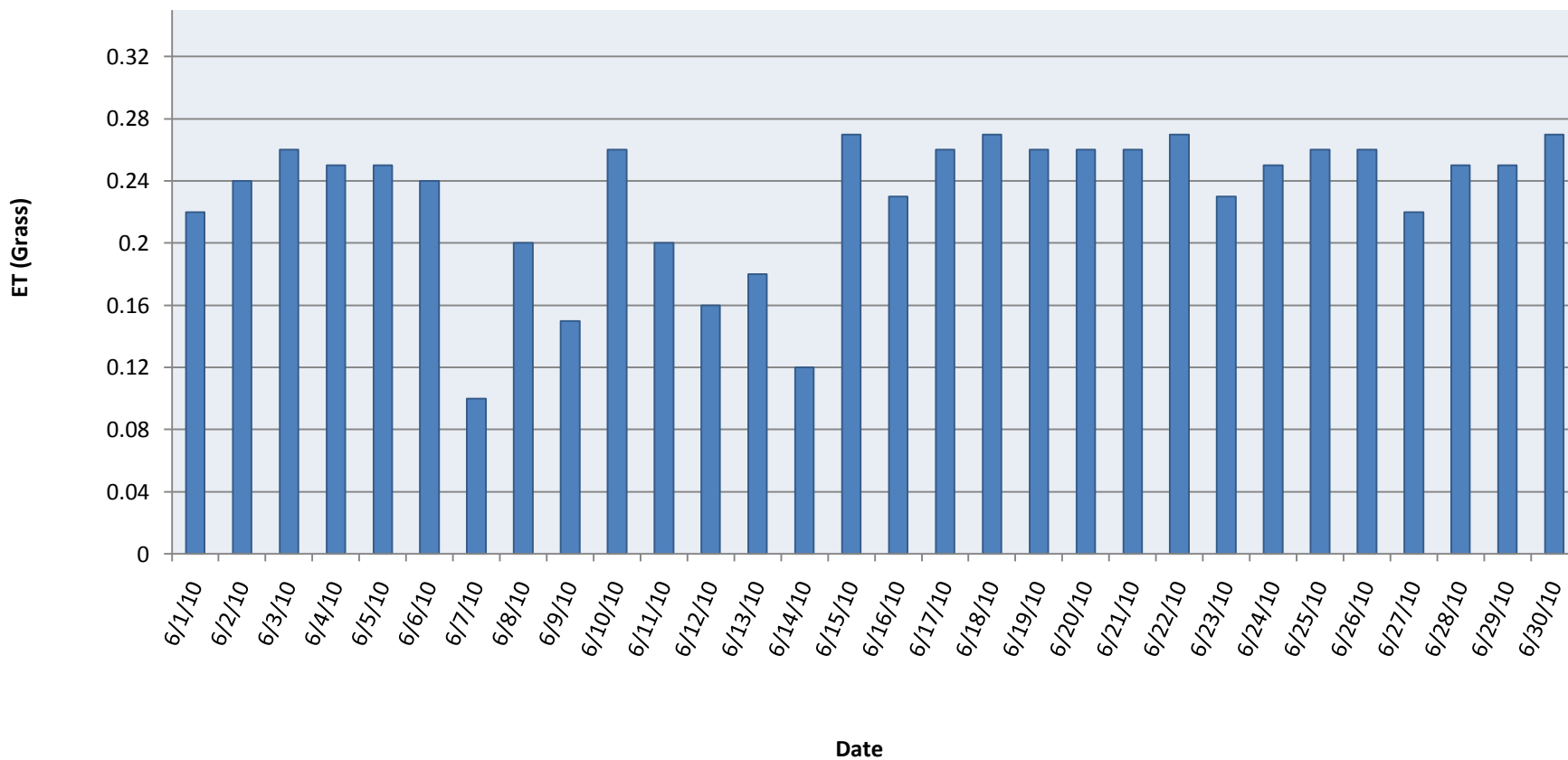
Equus Beds Groundwater Management District No. 2

N. Reno County Weather Station #1086

JUNE	Max Air Temp (°F)	Min Air Temp (°F)	Total Precip (in)	Avg RH (%)	Avg Wind Speed (mph)	Solar Radiation (langley)	ET (grass) (in)	Max 2" Soil Temp (°F)	Min 2" Soil Temp (°F)	Max 4" Soil Temp (°F)	Min 4" Soil Temp (°F)	Max RH (%)	Min RH (%)	Max Wind Speed (mph)	Wind Vector Speed (mph)	Vector Direction (°)
6/1/2010	93.7	69	0	70.7	7.57	600.9	0.22	0	0	0	0	0	0	17.77	0	0
6/2/2010	85.3	65.5	0	74.3	5.65	671.1	0.24	0	0	0	0	0	0	13.53	0	0
6/3/2010	88.7	61.2	0	70.9	3.65	716.5	0.26	0	0	0	0	0	0	10.1	0	0
6/4/2010	96.3	68.8	0	69.1	6.24	691.8	0.25	0	0	0	0	0	0	13.65	0	0
6/5/2010	98.2	71.2	0	62.1	6.15	691.8	0.25	0	0	0	0	0	0	15.59	0	0
6/6/2010	89	66	0	55.9	4.59	660.8	0.24	0	0	0	0	0	0	11.94	0	0
6/7/2010	79.7	61.1	0.61	87.9	6.63	285	0.1	0	0	0	0	0	0	30.69	0	0
6/8/2010	92.2	68.6	0	85.3	6.8	530.7	0.2	0	0	0	0	0	0	16.4	0	0
6/9/2010	82.6	69.2	1.16	92.9	3.82	421.3	0.15	0	0	0	0	0	0	12.05	0	0
6/10/2010	89.2	70.9	0	86.5	9.38	702.1	0.26	0	0	0	0	0	0	18.8	0	0
6/11/2010	91.7	74.1	0	82	8.38	555.5	0.2	0	0	0	0	0	0	17.65	0	0
6/12/2010	90.9	68	0.28	88.2	5.64	429.5	0.16	0	0	0	0	0	0	15.93	0	0
6/13/2010	85.1	66.2	3.16	92.8	5.17	487.3	0.18	0	0	0	0	0	0	32.4	0	0
6/14/2010	76.8	66.9	0.07	94.9	2.52	313.9	0.12	0	0	0	0	0	0	10.34	0	0
6/15/2010	86.8	64.8	2.61	80.8	2.44	731	0.27	0	0	0	0	0	0	16.05	0	0
6/16/2010	88	70.6	0	83.4	6.52	638.1	0.23	0	0	0	0	0	0	16.74	0	0
6/17/2010	91.5	74.1	0	73.2	8.45	720.7	0.26	0	0	0	0	0	0	19.14	0	0
6/18/2010	93.7	73.4	0	72.8	6.64	735.1	0.27	0	0	0	0	0	0	16.28	0	0
6/19/2010	96	73.5	0	76.3	6.72	718.6	0.26	0	0	0	0	0	0	18.91	0	0
6/20/2010	95.2	68.3	0	74.2	7.51	706.2	0.26	0	0	0	0	0	0	17.54	0	0
6/21/2010	95.2	68.2	0	70	6	722.7	0.26	0	0	0	0	0	0	14.8	0	0
6/22/2010	97.1	75.5	0	66.5	7.41	720.7	0.27	0	0	0	0	0	0	16.85	0	0
6/23/2010	92.9	71.8	0	67.2	4.75	642.2	0.23	0	0	0	0	0	0	12.96	0	0
6/24/2010	87.6	66.7	0	68.8	2.99	679.4	0.25	0	0	0	0	0	0	8.28	0	0
6/25/2010	95.6	72.9	0	70.2	5.57	698	0.26	0	0	0	0	0	0	12.5	0	0
6/26/2010	98.5	73.1	0	66.6	6.42	710.3	0.26	0	0	0	0	0	0	14.45	0	0
6/27/2010	90.6	70.2	0	60	3.96	611.2	0.22	0	0	0	0	0	0	10.22	0	0
6/28/2010	91	62.1	0	61.3	1.53	687.6	0.25	0	0	0	0	0	0	8.62	0	0
6/29/2010	93.4	62.4	0	64.2	1.91	681.4	0.25	0	0	0	0	0	0	8.85	0	0
6/30/2010	86.8	63	0	65.6	3.01	747.5	0.27	0	0	0	0	0	0	9.53	0	0

Equus Beds Groundwater Management District No. 2
N. Reno County Weather Station #1086

Evapotranspiration (ET) in North Reno County
at Weather Station #1086
June 2010



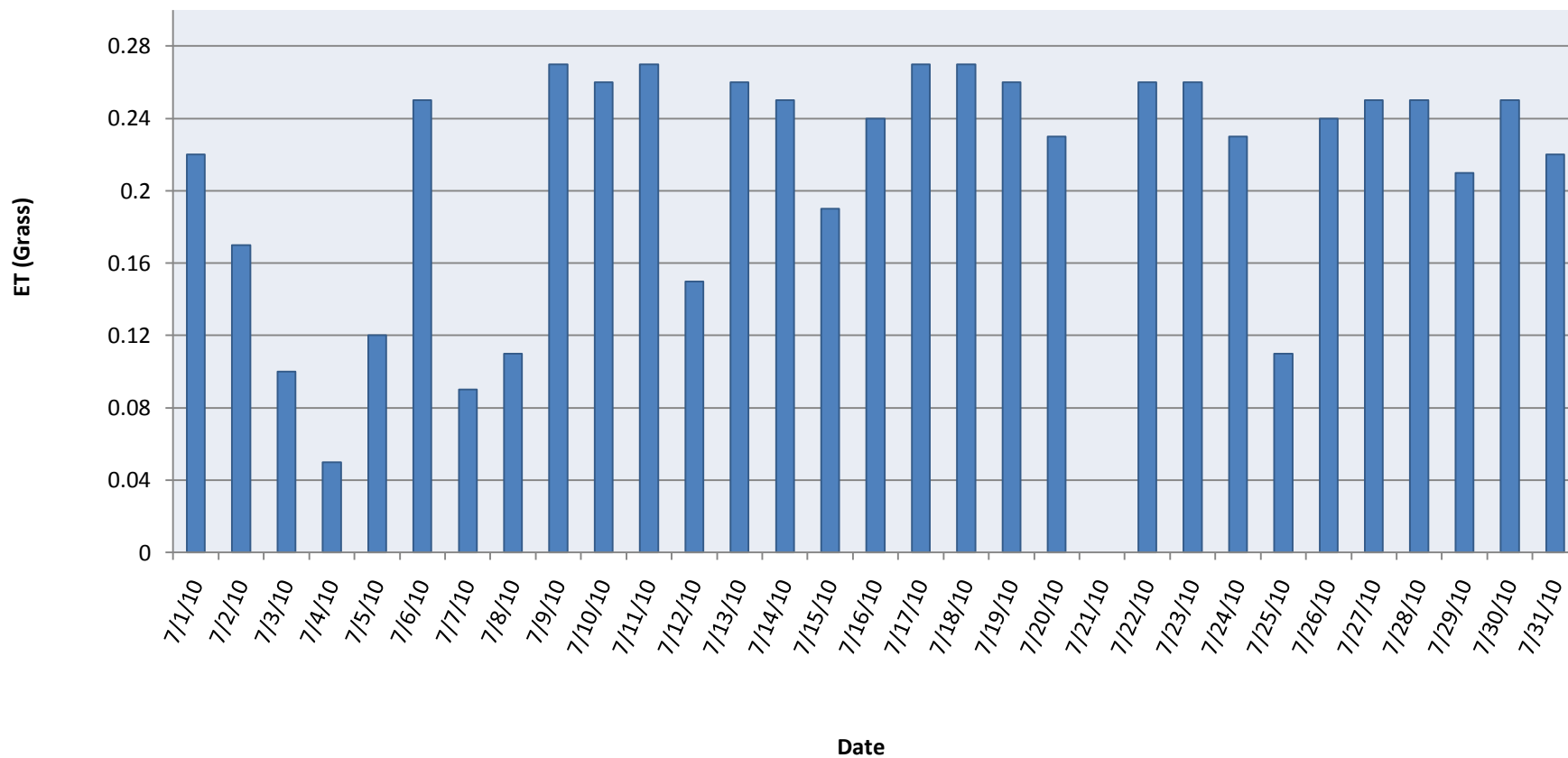
Equus Beds Groundwater Management District No. 2

N. Reno County Weather Station #1086

JULY	Max Air Temp (°F)	Min Air Temp (°F)	Total Precip (in)	Avg RH (%)	Avg Wind Speed (mph)	Solar Radiation (langley)	ET (grass) (in)	Max 2" Soil Temp (°F)	Min 2" Soil Temp (°F)	Max 4" Soil Temp (°F)	Min 4" Soil Temp (°F)	Max RH (%)	Min RH (%)	Max Wind Speed (mph)	Wind Vector Speed (mph)	Vector Direction (°)
7/1/2010	87.7	62.7	0	70.3	4.06	594.7	0.22	0	0	0	0	0	0	12.16	0	0
7/2/2010	87.1	67	0	77.4	6.16	448.1	0.17	0	0	0	0	0	0	14.22	0	0
7/3/2010	81.4	73.4	0.67	93.2	7.2	249.9	0.1	0	0	0	0	0	0	14.45	0	0
7/4/2010	76.1	68.4	3.25	99.4	3.95	138.4	0.05	0	0	0	0	0	0	12.4	0	0
7/5/2010	80.8	66.2	1.67	95.9	2.11	318	0.12	0	0	0	0	0	0	13.65	0	0
7/6/2010	85.5	64.5	0	90	1.96	671.1	0.25	0	0	0	0	0	0	11.59	0	0
7/7/2010	83.3	70.4	0.05	87.2	2.41	485.3	0.09	0	0	0	0	0	0	7.36	0	0
7/8/2010	79.2	69.1	0	93.6	2.71	297.4	0.11	0	0	0	0	0	0	8.73	0	0
7/9/2010	84.4	66.2	0	83.1	1.61	714.5	0.27	0	0	0	0	0	0	8.39	0	0
7/10/2010	88.2	66.8	0	79.3	3.16	691.8	0.26	0	0	0	0	0	0	10.45	0	0
7/11/2010	92.4	70.9	0	75.4	2.72	731	0.27	0	0	0	0	0	0	9.88	0	0
7/12/2010	87.2	68.5	0.38	88.8	2.43	406.8	0.15	0	0	0	0	0	0	9.31	0	0
7/13/2010	95.8	68.9	0	81.2	3.8	706.2	0.26	0	0	0	0	0	0	11.47	0	0
7/14/2010	95.9	71.5	0.05	81	5.77	677.3	0.25	0	0	0	0	0	0	16.4	0	0
7/15/2010	87	71.5	0.09	91.6	2.34	512.1	0.19	0	0	0	0	0	0	7.7	0	0
7/16/2010	95.4	72	0	83.8	1.96	644.3	0.24	0	0	0	0	0	0	8.97	0	0
7/17/2010	97.7	72.2	0	75.3	2.73	718.6	0.27	0	0	0	0	0	0	9.42	0	0
7/18/2010	98.1	69.3	0	62.9	3.08	724.8	0.27	0	0	0	0	0	0	9.65	0	0
7/19/2010	98	77.1	0	57.9	5.22	702.1	0.26	0	0	0	0	0	0	12.4	0	0
7/20/2010	96.9	75	0	72	4.35	594.7	0.23	0	0	0	0	0	0	14.11	0	0
7/22/2010	95.9	76.7	0	63.6	7.06	702.1	0.26	0	0	0	0	0	0	17.77	0	0
7/23/2010	97.3	77.4	0	63.2	6.74	708.3	0.26	0	0	0	0	0	0	16.17	0	0
7/24/2010	97.6	71.8	0.14	77.9	3.14	592.6	0.23	0	0	0	0	0	0	10.1	0	0
7/25/2010	83.2	70.9	0	92.4	1.08	307.7	0.11	0	0	0	0	0	0	7.82	0	0
7/26/2010	93.1	69.2	0	77.9	2.97	636	0.24	0	0	0	0	0	0	9.42	0	0
7/27/2010	91.7	71.1	0	73.2	3.23	687.6	0.25	0	0	0	0	0	0	11.71	0	0
7/28/2010	93.1	71.2	0	75.8	2.69	683.5	0.25	0	0	0	0	0	0	9.88	0	0
7/29/2010	93.1	72.2	0.02	83	3.42	557.5	0.21	0	0	0	0	0	0	11.94	0	0
7/29/2010	93.1	72.2	0.02	83	3.42	557.5	0.21	0	0	0	0	0	0	11.94	0	0
7/30/2010	98.7	74.4	0	65.9	3.75	667	0.25	0	0	0	0	0	0	10.68	0	0
7/31/2010	95.3	73.5	0	71.1	2.3	605	0.22	0	0	0	0	0	0	9.76	0	0

Equus Beds Groundwater Management District No. 2
N. Reno County Weather Station #1086

Evapotranspiration (ET) in North Reno County
at Weather Station #1086
July 2010



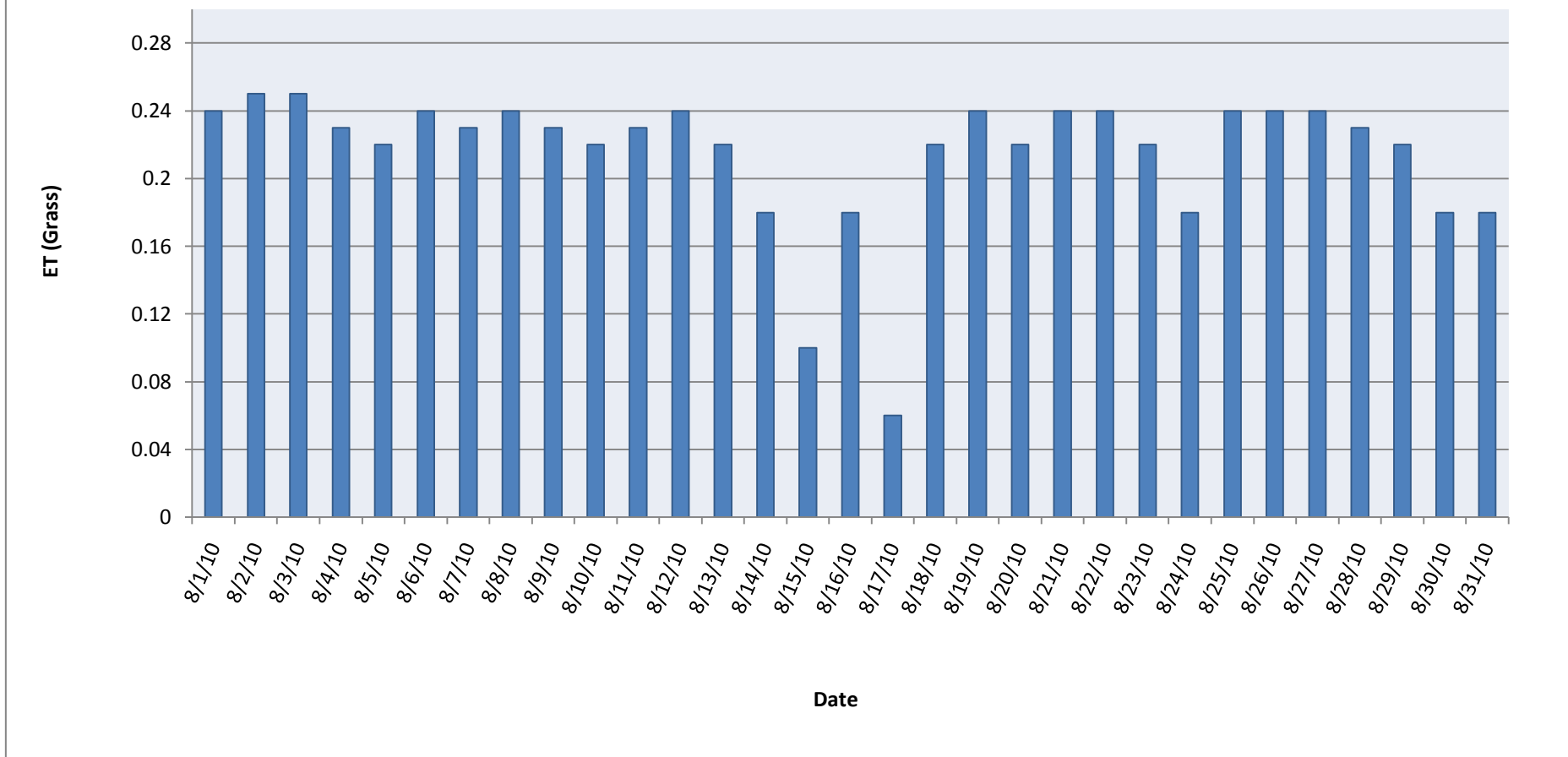
Equus Beds Groundwater Management District No. 2

N. Reno County Weather Station #1086

AUGUST	Max Air Temp (°F)	Min Air Temp (°F)	Total Precip (in)	Avg RH (%)	Avg Wind Speed (mph)	Solar Radiation (langley)	ET (grass) (in)	Max 2" Soil Temp (°F)	Min 2" Soil Temp (°F)	Max 4" Soil Temp (°F)	Min 4" Soil Temp (°F)	Max RH (%)	Min RH (%)	Max Wind Speed (mph)	Wind Vector Speed (mph)	Vector Direction (°)
8/1/2010	97.2	73.2	0	76.5	4.19	646.3	0.24	0	0	0	0	0	0	11.02	0	0
8/2/2010	108	76.2	0	53.4	4.81	687.6	0.25	0	0	0	0	0	0	12.85	0	0
8/3/2010	105.8	74.4	0	45.5	3.46	671.1	0.25	0	0	0	0	0	0	9.65	0	0
8/4/2010	93.1	74.3	0	65.7	3.91	629.8	0.23	0	0	0	0	0	0	11.13	0	0
8/5/2010	91.6	72	0	76.1	2.47	605	0.22	0	0	0	0	0	0	11.25	0	0
8/6/2010	91.1	67.7	0	73.1	1.65	638.1	0.24	0	0	0	0	0	0	9.07	0	0
8/7/2010	98.3	69.3	0	71.5	3.69	615.4	0.23	0	0	0	0	0	0	10.56	0	0
8/8/2010	105.1	77.1	0	61.2	5.39	640.1	0.24	0	0	0	0	0	0	13.19	0	0
8/9/2010	102.3	76	0	56.2	4.41	621.6	0.23	0	0	0	0	0	0	12.96	0	0
8/10/2010	103.7	75.3	0	62.2	3.52	578.2	0.22	0	0	0	0	0	0	12.16	0	0
8/11/2010	104	75.5	0	59.5	2.69	619.5	0.23	0	0	0	0	0	0	8.62	0	0
8/12/2010	104.4	75.6	0	56	3.95	648.4	0.24	0	0	0	0	0	0	13.31	0	0
8/13/2010	107.4	77.6	0	52.1	4.95	596.8	0.22	0	0	0	0	0	0	15.37	0	0
8/14/2010	96.6	72.3	0.15	75.6	2.74	472.9	0.18	0	0	0	0	0	0	9.53	0	0
8/15/2010	81.9	63.8	0.53	85.7	3.1	301.5	0.1	0	0	0	0	0	0	13.53	0	0
8/16/2010	85.6	63.5	0	74	2.07	477	0.18	0	0	0	0	0	0	7.94	0	0
8/17/2010	72.6	66.4	1.16	98	1.61	159	0.06	0	0	0	0	0	0	7.25	0	0
8/18/2010	86	62.5	0	87.8	1.66	592.6	0.22	0	0	0	0	0	0	5.76	0	0
8/19/2010	94	66.4	0	76	5.24	642.2	0.24	0	0	0	0	0	0	13.53	0	0
8/20/2010	97	74.7	0	71.6	5.81	607.1	0.22	0	0	0	0	0	0	15.48	0	0
8/21/2010	96.1	65.8	0	73.1	2.35	652.5	0.24	0	0	0	0	0	0	8.62	0	0
8/22/2010	94.4	66.5	0	70.2	2.68	640.1	0.24	0	0	0	0	0	0	11.13	0	0
8/23/2010	96.9	69.9	0	73.4	3.85	603	0.22	0	0	0	0	0	0	10.34	0	0
8/24/2010	80.3	59	1.7	78.2	7.28	497.7	0.18	0	0	0	0	0	0	20.97	0	0
8/25/2010	81.2	55.3	0	71.8	2.35	656.7	0.24	0	0	0	0	0	0	9.31	0	0
8/26/2010	82.9	56.7	0	73.2	2.41	642.2	0.24	0	0	0	0	0	0	10.34	0	0
8/27/2010	87.1	58.2	0	65.7	4.44	644.3	0.24	0	0	0	0	0	0	13.88	0	0
8/28/2010	89.9	61.8	0	58	6.58	613.3	0.23	0	0	0	0	0	0	17.19	0	0
8/29/2010	93.3	65.1	0	63.1	7.7	592.6	0.22	0	0	0	0	0	0	18.11	0	0
8/30/2010	92.1	71.7	0	76.7	8.58	510	0.18	0	0	0	0	0	0	17.31	0	0
8/31/2010	97.3	74.7	0	73	9.6	516.2	0.18	0	0	0	0	0	0	18.22	0	0

Equus Beds Groundwater Management District No. 2
N. Reno County Weather Station #1086

Evapotranspiration (ET) in North Reno County
at Weather Station #1086
August 2010



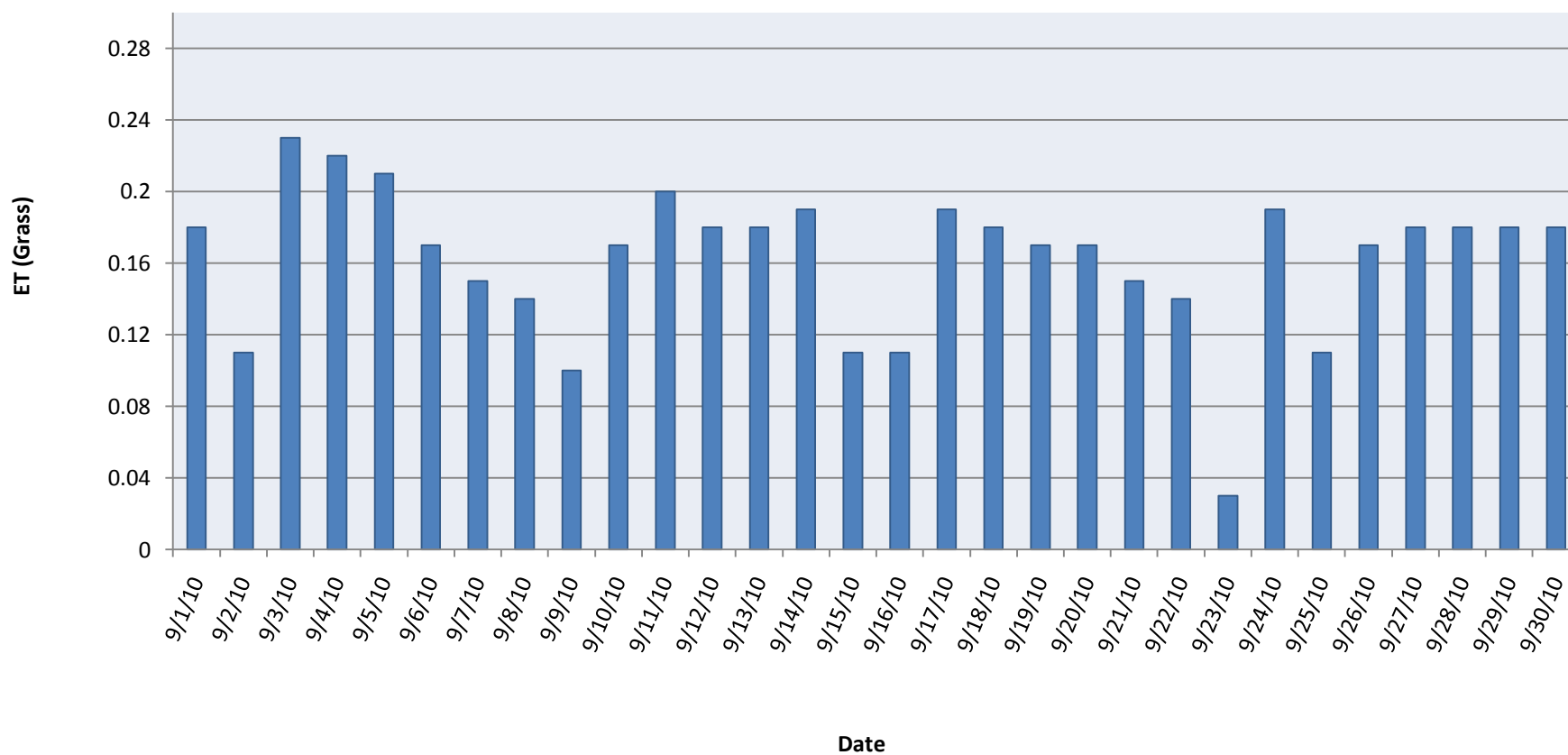
Equus Beds Groundwater Management District No. 2

N. Reno County Weather Station #1086

SEPTEMBER	Max Air Temp (°F)	Min Air Temp (°F)	Total Precip (in)	Avg RH (%)	Avg Wind Speed (mph)	Solar Radiation (langley)	ET (grass) (in)	Max 2" Soil Temp (°F)	Min 2" Soil Temp (°F)	Max 4" Soil Temp (°F)	Min 4" Soil Temp (°F)	Max RH (%)	Min RH (%)	Max Wind Speed (mph)	Wind Vector Speed (mph)	Vector Direction (°)
9/1/2010	91.4	68.3	0	86	5.09	495.6	0.18	0	0	0	0	0	0	16.85	0	0
9/2/2010	83.9	56.5	0	84.1	4.52	320.1	0.11	0	0	0	0	0	0	20.74	0	0
9/3/2010	79	50.9	0	61.3	4.14	625.7	0.23	0	0	0	0	0	0	14.22	0	0
9/4/2010	84.7	52.4	0	54.2	5.82	605	0.22	0	0	0	0	0	0	16.74	0	0
9/5/2010	94	60.9	0	49.8	11.07	572	0.21	0	0	0	0	0	0	23.94	0	0
9/6/2010	100.1	64.7	0	55.2	10.03	464.6	0.17	0	0	0	0	0	0	22.68	0	0
9/7/2010	79.2	62.6	0	57.3	3.7	410.9	0.15	0	0	0	0	0	0	11.37	0	0
9/8/2010	82.3	66.2	0.06	88	5.68	373.8	0.14	0	0	0	0	0	0	15.82	0	0
9/9/2010	79.8	66.2	0.08	93.2	3.47	270.5	0.1	0	0	0	0	0	0	11.94	0	0
9/10/2010	94.7	70.6	0	75.7	6.2	468.7	0.17	0	0	0	0	0	0	13.42	0	0
9/11/2010	83.1	61	0	72.1	4.15	549.3	0.2	0	0	0	0	0	0	12.4	0	0
9/12/2010	88	56.8	0	77.4	5.77	510	0.18	0	0	0	0	0	0	14.34	0	0
9/13/2010	91.8	68.3	0	84.6	6.35	510	0.18	0	0	0	0	0	0	16.74	0	0
9/14/2010	89.8	68.3	0	81	5.75	526.6	0.19	0	0	0	0	0	0	13.65	0	0
9/15/2010	87.4	62.6	0.01	92.6	6.07	313.9	0.11	0	0	0	0	0	0	14.68	0	0
9/16/2010	74.2	60.1	0	87.5	3.12	311.8	0.11	0	0	0	0	0	0	12.05	0	0
9/17/2010	91.8	59.8	0	75.6	3.87	534.8	0.19	0	0	0	0	0	0	12.4	0	0
9/18/2010	95	63.7	0	71.6	5.02	499.7	0.18	0	0	0	0	0	0	14.11	0	0
9/19/2010	91.7	54.4	0	75.3	3.12	481.1	0.17	0	0	0	0	0	0	11.59	0	0
9/20/2010	91.5	69.7	0	63.9	9.11	474.9	0.17	0	0	0	0	0	0	21.2	0	0
9/21/2010	90.5	71.4	0	68.9	10.03	439.8	0.15	0	0	0	0	0	0	19.71	0	0
9/22/2010	89.9	70.6	0	75	10.36	402.7	0.14	0	0	0	0	0	0	20.05	0	0
9/23/2010	77	62.2	0.71	92	9.43	80.5	0.03	0	0	0	0	0	0	20.86	0	0
9/24/2010	79	55.9	0	80.2	1.53	532.8	0.19	0	0	0	0	0	0	9.31	0	0
9/25/2010	82.6	53.3	0.56	90.6	4.38	309.7	0.11	0	0	0	0	0	0	18.22	0	0
9/26/2010	68.3	46.8	0	82.7	2.75	468.7	0.17	0	0	0	0	0	0	11.59	0	0
9/27/2010	73.5	46.2	0	81.2	3.21	501.8	0.18	0	0	0	0	0	0	11.47	0	0
9/28/2010	77.8	53.6	0	72.9	3.13	518.3	0.18	0	0	0	0	0	0	11.25	0	0
9/29/2010	85	50.9	0	71.2	3.18	493.5	0.18	0	0	0	0	0	0	13.31	0	0
9/30/2010	75.6	51.8	0	59	4.8	501.8	0.18	0	0	0	0	0	0	12.96	0	0

Equus Beds Groundwater Management District No. 2
N. Reno County Weather Station #1086

Evapotranspiration (ET) in North Reno County
at Weather Station #1086
September 2010



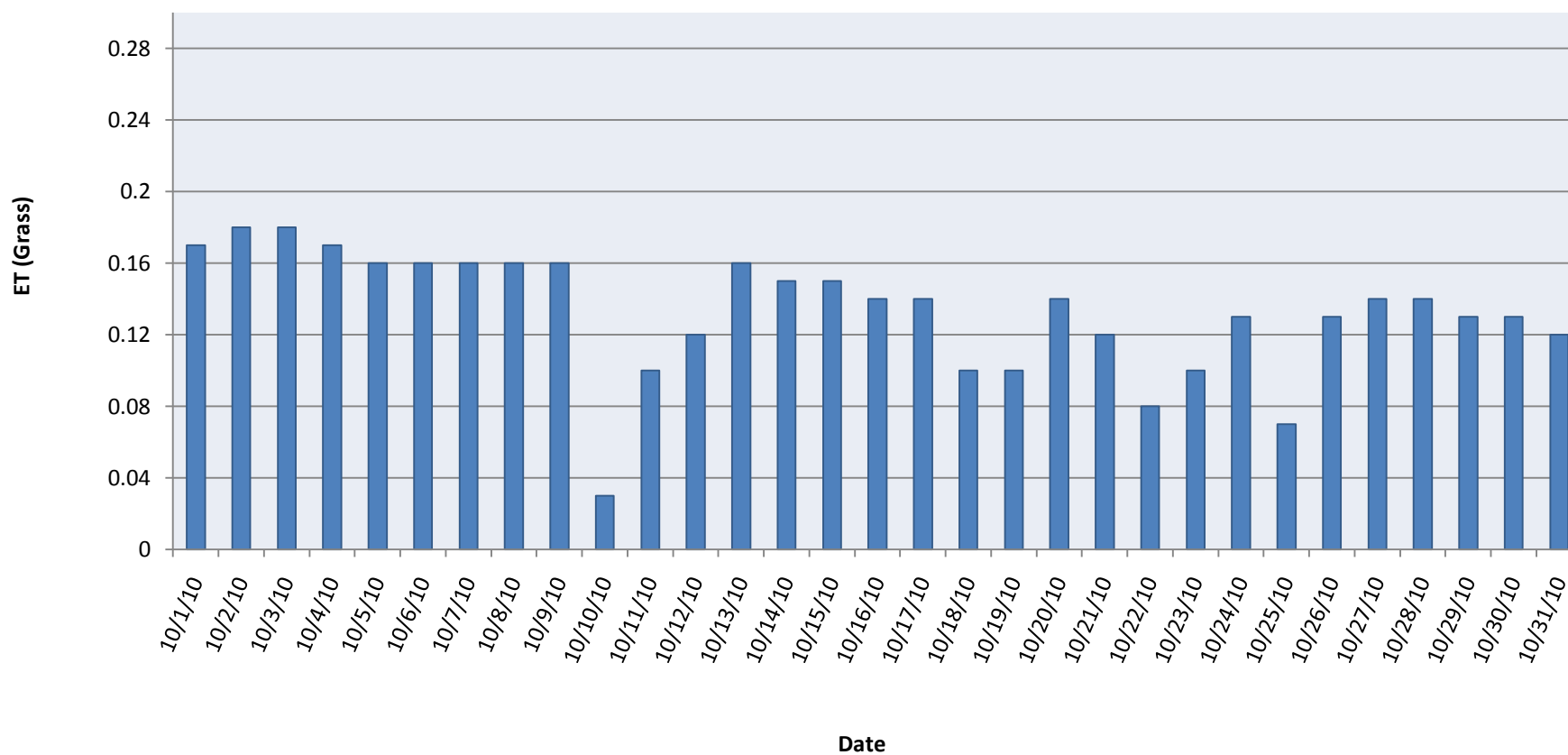
Equus Beds Groundwater Management District No. 2

N. Reno County Weather Station #1086

OCTOBER	Max Air Temp (°F)	Min Air Temp (°F)	Total Precip (in)	Avg RH (%)	Avg Wind Speed (mph)	Solar Radiation (langley)	ET (grass) (in)	Max 2" Soil Temp (°F)	Min 2" Soil Temp (°F)	Max 4" Soil Temp (°F)	Min 4" Soil Temp (°F)	Max RH (%)	Min RH (%)	Max Wind Speed (mph)	Wind Vector Speed (mph)	Vector Direction (°)
10/1/2010	78.2	43.7	0	68.9	1.15	489.4	0.17	0	0	0	0	0	0	8.5	0	0
10/2/2010	66	45.2	0	64.6	6	501.8	0.18	0	0	0	0	0	0	16.85	0	0
10/3/2010	65	32.8	0	66.2	2.64	514.2	0.18	0	0	0	0	0	0	9.42	0	0
10/4/2010	70.4	41.8	0	60	5.57	487.3	0.17	0	0	0	0	0	0	13.88	0	0
10/5/2010	77.4	47.7	0	58.6	6.21	468.7	0.16	0	0	0	0	0	0	15.59	0	0
10/6/2010	84.3	49.7	0	58.1	3.27	454.3	0.16	0	0	0	0	0	0	9.65	0	0
10/7/2010	87.5	50.8	0	63.3	1.86	450.2	0.16	0	0	0	0	0	0	9.53	0	0
10/8/2010	88.6	54.1	0	55.4	4.59	456.4	0.16	0	0	0	0	0	0	13.77	0	0
10/9/2010	83.6	52.3	0	51.7	2.73	458.4	0.16	0	0	0	0	0	0	11.13	0	0
10/10/2010	61.9	44.1	0.28	88.8	1.85	76.4	0.03	0	0	0	0	0	0	12.05	0	0
10/11/2010	66.6	48.7	0	93	2.6	305.6	0.1	0	0	0	0	0	0	13.77	0	0
10/12/2010	74.6	52.5	0	79.3	4.18	338.7	0.12	0	0	0	0	0	0	14.45	0	0
10/13/2010	68.6	42	0	59.6	4	460.5	0.16	0	0	0	0	0	0	13.08	0	0
10/14/2010	80.1	39.9	0	58.1	3.47	439.8	0.15	0	0	0	0	0	0	14.8	0	0
10/15/2010	82	44.4	0	54.3	4.15	444	0.15	0	0	0	0	0	0	12.74	0	0
10/16/2010	87.6	53.8	0	56.3	4.96	406.8	0.14	0	0	0	0	0	0	11.71	0	0
10/17/2010	82.8	46	0	63.5	2.55	421.3	0.14	0	0	0	0	0	0	10.68	0	0
10/18/2010	73.3	52.2	0	63.8	5.38	287	0.1	0	0	0	0	0	0	17.31	0	0
10/19/2010	69.9	48.1	0	56.8	1.52	301.5	0.1	0	0	0	0	0	0	7.82	0	0
10/20/2010	79.8	41.9	0	54.6	1.89	421.3	0.14	0	0	0	0	0	0	9.07	0	0
10/21/2010	82.2	49.9	0	67.3	2.92	357.2	0.12	0	0	0	0	0	0	12.62	0	0
10/22/2010	69.1	57.4	0.03	85.8	6.68	233.3	0.08	0	0	0	0	0	0	18.91	0	0
10/23/2010	74.6	56.4	0	85.5	9.5	309.7	0.1	0	0	0	0	0	0	21.42	0	0
10/24/2010	75.2	50.1	0	80.3	3.57	390.3	0.13	0	0	0	0	0	0	10.45	0	0
10/25/2010	71.1	51.3	0	78.9	7.76	192	0.07	0	0	0	0	0	0	21.54	0	0
10/26/2010	67.5	37.9	0	46.4	7.09	392.3	0.13	0	0	0	0	0	0	17.77	0	0
10/27/2010	66.7	36.5	0	41.7	6.63	415.1	0.14	0	0	0	0	0	0	19.83	0	0
10/28/2010	64.8	34.2	0	49.5	3.46	410.9	0.14	0	0	0	0	0	0	12.28	0	0
10/29/2010	69	38.1	0	46.8	7.8	390.3	0.13	0	0	0	0	0	0	21.08	0	0
10/30/2010	71.2	43.3	0	55.2	3.18	390.3	0.13	0	0	0	0	0	0	9.76	0	0
10/31/2010	67.7	45.6	0	62	7.8	371.7	0.12	0	0	0	0	0	0	16.17	0	0

Equus Beds Groundwater Management District No. 2
N. Reno County Weather Station #1086

Evapotranspiration (ET) in North Reno County
at Weather Station #1086
October 2010



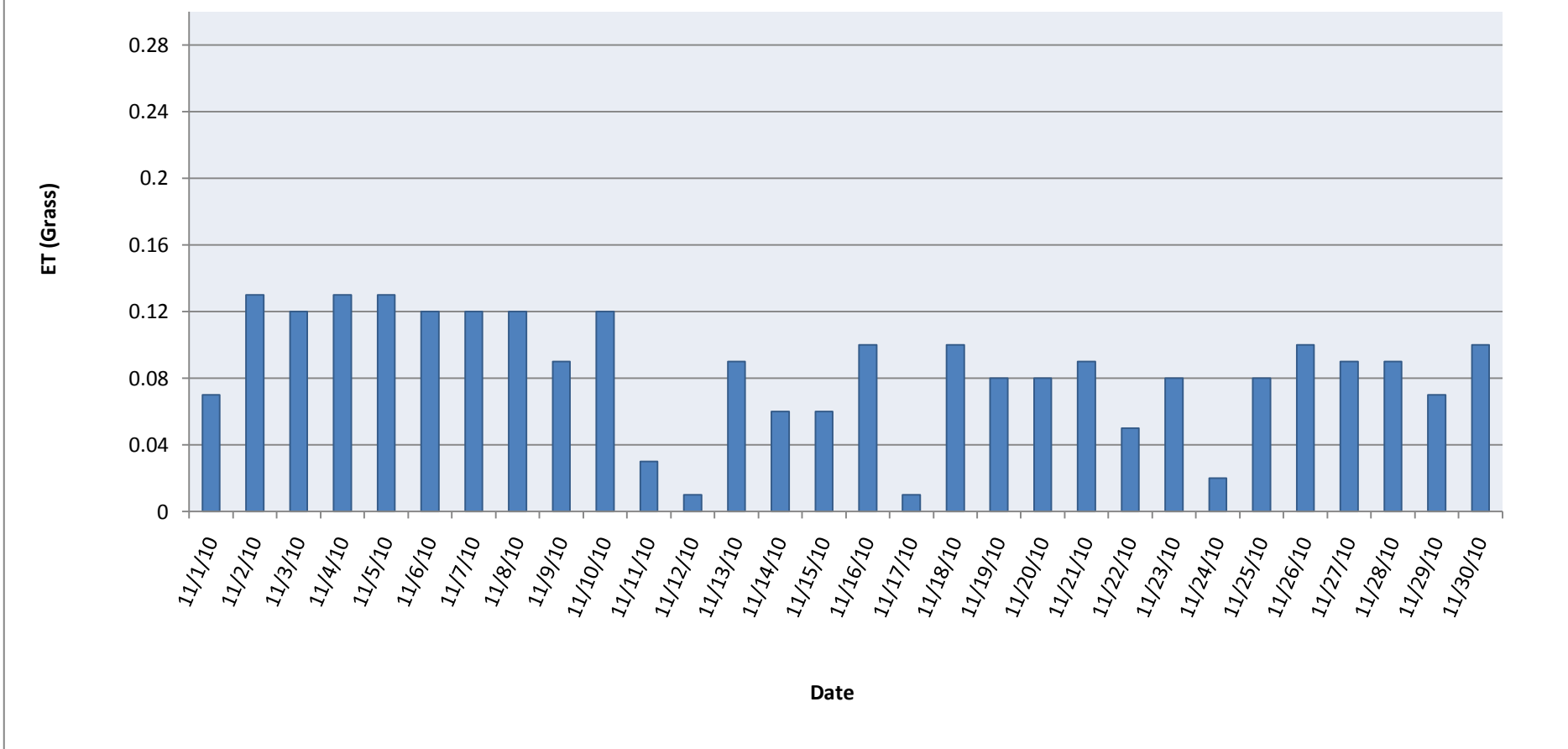
Equus Beds Groundwater Management District No. 2

N. Reno County Weather Station #1086

NOVEMBER	Max Air Temp (°F)	Min Air Temp (°F)	Total Precip (in)	Avg RH (%)	Avg Wind Speed (mph)	Solar Radiation (langley)	ET (grass) (in)	Max 2" Soil Temp (°F)	Min 2" Soil Temp (°F)	Max 4" Soil Temp (°F)	Min 4" Soil Temp (°F)	Max RH (%)	Min RH (%)	Max Wind Speed (mph)	Wind Vector Speed (mph)	Vector Direction (°)
11/1/2010	60.5	41.4	0	67.6	6.05	223	0.07	0	0	0	0	0	0	13.88	0	0
11/2/2010	63.4	32.1	0	60.6	3.15	382	0.13	0	0	0	0	0	0	10.79	0	0
11/3/2010	69.8	31.9	0	49.1	5.51	371.7	0.12	0	0	0	0	0	0	21.89	0	0
11/4/2010	58.3	34.2	0	44.8	6.12	396.5	0.13	0	0	0	0	0	0	19.25	0	0
11/5/2010	57.3	24.2	0	56.5	2.37	386.1	0.13	0	0	0	0	0	0	6.22	0	0
11/6/2010	65.7	33.4	0	46.3	7.66	371.7	0.12	0	0	0	0	0	0	18.8	0	0
11/7/2010	73.9	41.5	0	48.5	10.56	363.4	0.12	0	0	0	0	0	0	21.65	0	0
11/8/2010	72.9	45.3	0	58.3	8.36	355.2	0.12	0	0	0	0	0	0	14.68	0	0
11/9/2010	70.9	51.7	0	74.6	10.56	282.9	0.09	0	0	0	0	0	0	21.89	0	0
11/10/2010	58.9	35.4	0	72.9	4.38	355.2	0.12	0	0	0	0	0	0	14.11	0	0
11/11/2010	55.9	36.9	0.21	89	6.14	92.9	0.03	0	0	0	0	0	0	15.82	0	0
11/12/2010	50.1	34.5	2.38	99.6	8.23	31	0.01	0	0	0	0	0	0	17.54	0	0
11/13/2010	50.7	33.9	0	87.7	3.29	276.7	0.09	0	0	0	0	0	0	9.88	0	0
11/14/2010	50.6	33.4	0	86.4	3.14	185.8	0.06	0	0	0	0	0	0	11.71	0	0
11/15/2010	51.9	31	0	90.5	2.13	200.3	0.06	0	0	0	0	0	0	7.7	0	0
11/16/2010	54.5	32.3	0	84.3	3.96	324.2	0.1	0	0	0	0	0	0	9.19	0	0
11/17/2010	45.3	28.5	0.27	93.4	7.64	43.4	0.01	0	0	0	0	0	0	25.54	0	0
11/18/2010	46.7	24.1	0.01	89.8	5.06	303.5	0.1	0	0	0	0	0	0	14.56	0	0
11/19/2010	58.9	34.1	0	79.8	6.4	262.2	0.08	0	0	0	0	0	0	14.11	0	0
11/20/2010	49.4	34.5	0	95.1	2.82	268.4	0.08	0	0	0	0	0	0	9.07	0	0
11/21/2010	70.2	38.3	0	85.5	5.15	289.1	0.09	0	0	0	0	0	0	11.94	0	0
11/22/2010	41.8	30	0	93.9	3.84	173.5	0.05	0	0	0	0	0	0	12.62	0	0
11/23/2010	47.6	23.4	0	91.3	4.39	247.8	0.08	0	0	0	0	0	0	11.94	0	0
11/24/2010	58.1	22.8	0	84.2	8.86	66.1	0.02	0	0	0	0	0	0	19.94	0	0
11/25/2010	37	18.1	0	58	4.47	256.1	0.08	0	0	0	0	0	0	15.93	0	0
11/26/2010	52.6	17.2	0	58.3	3.64	301.5	0.1	0	0	0	0	0	0	11.94	0	0
11/27/2010	58.3	24	0	60.8	4.04	299.4	0.09	0	0	0	0	0	0	13.88	0	0
11/28/2010	56.3	33.6	0	57.4	14.17	295.3	0.09	0	0	0	0	0	0	26.91	0	0
11/29/2010	48.7	27.3	0	75.2	10.72	210.6	0.07	0	0	0	0	0	0	21.31	0	0
11/30/2010	41.9	20.4	0	58.5	8.39	309.7	0.1	0	0	0	0	0	0	20.97	0	0

Equus Beds Groundwater Management District No. 2
N. Reno County Weather Station #1086

Evapotranspiration (ET) in North Reno County
at Weather Station #1086
November 2010



Equus Beds Groundwater Management District No. 2

N. Reno County Weather Station #1086

DECEMBER	Max Air Temp (°F)	Min Air Temp (°F)	Total Precip (in)	Avg RH (%)	Avg Wind Speed (mph)	Solar Radiation (langley)	ET (grass) (in)	Max 2" Soil Temp (°F)	Min 2" Soil Temp (°F)	Max 4" Soil Temp (°F)	Min 4" Soil Temp (°F)	Max RH (%)	Min RH (%)	Max Wind Speed (mph)	Wind Vector Speed (mph)	Vector Direction (°)
12/1/2010	42.1	17	0	68.6	2.37	237.5	0.07	0	0	0	0	0	0	7.7	0	0
12/2/2010	58.2	24.3	0	64.9	2	278.8	0.09	0	0	0	0	0	0	8.97	0	0
12/3/2010	59.7	32.2	0	72.4	5	214.8	0.06	0	0	0	0	0	0	15.93	0	0
12/4/2010	47.1	23.1	0	73.3	7.45	266.4	0.08	0	0	0	0	0	0	19.25	0	0
12/5/2010	32.5	17.2	0	74.3	4.3	148.7	0.04	0	0	0	0	0	0	10.91	0	0
12/6/2010	46.2	14.3	0	76.1	2.84	291.2	0.09	0	0	0	0	0	0	9.07	0	0
12/7/2010	42	21.6	0	81.2	1.81	113.6	0.03	0	0	0	0	0	0	5.88	0	0
12/8/2010	53.6	18.1	0	88.1	2.5	235.4	0.07	0	0	0	0	0	0	7.7	0	0
12/9/2010	59.9	31.2	0	83.4	4.02	214.8	0.06	0	0	0	0	0	0	9.99	0	0
12/10/2010	59.1	27.2	0	83.1	4.44	175.5	0.05	0	0	0	0	0	0	14.34	0	0
12/11/2010	46.1	20.6	0	60.2	13.68	285	0.09	0	0	0	0	0	0	27.37	0	0
12/12/2010	28.6	11	0	53.7	7.75	301.5	0.09	0	0	0	0	0	0	22.68	0	0
12/13/2010	32.9	14.5	0	37.6	5.13	282.9	0.09	0	0	0	0	0	0	11.94	0	0
12/14/2010	40.3	17.4	0	42.3	4.9	256.1	0.08	0	0	0	0	0	0	11.37	0	0
12/15/2010	39.4	22.8	0	74.5	5.32	187.9	0.05	0	0	0	0	0	0	12.16	0	0
12/16/2010	49.5	26.3	0	67.6	3.42	274.6	0.08	0	0	0	0	0	0	11.13	0	0
12/17/2010	33.1	22.4	0	80.8	2.55	159	0.05	0	0	0	0	0	0	8.85	0	0
12/18/2010	38.2	24.2	0	90.9	4.09	72.3	0.03	0	0	0	0	0	0	9.31	0	0
12/19/2010	48.9	23.7	0	81.6	5.63	251.9	0.08	0	0	0	0	0	0	15.48	0	0
12/20/2010	58	33.9	0	77.1	5.85	196.2	0.05	0	0	0	0	0	0	13.77	0	0
12/21/2010	43	29.4	0	77.6	6.61	194.1	0.06	0	0	0	0	0	0	15.48	0	0
12/22/2010	0	0	0	0	0	0	0	0	0	0	0	0	0	0	0	0
12/23/2010	32.4	15.5	0.01	83.2	3.72	68.1	0.01	0	0	0	0	0	0	10.34	0	0
12/24/2010	34.4	29	0.03	83.2	5.8	103.2	0.02	0	0	0	0	0	0	18.57	0	0
12/25/2010	29.5	23.7	0	75.1	8.52	57.8	0.01	0	0	0	0	0	0	18.11	0	0
12/26/2010	30.4	19.2	0	77.7	3.82	179.7	0.02	0	0	0	0	0	0	10.56	0	0
12/27/2010	42.7	19.3	0	72.6	5.9	251.9	0.04	0	0	0	0	0	0	18.11	0	0
12/28/2010	44.3	16.6	0	76.3	2.11	169.3	0.03	0	0	0	0	0	0	9.42	0	0
12/29/2010	56.2	36.2	0	91.7	10.15	45.4	0.01	0	0	0	0	0	0	26.8	0	0
12/30/2010	67	28.3	0	57.9	11.54	233.3	0.1	0	0	0	0	0	0	25.2	0	0
12/31/2010	29.1	9.6	0	67.4	7.06	187.9	0.02	0	0	0	0	0	0	15.59	0	0

Equus Beds Groundwater Management District No. 2
N. Reno County Weather Station #1086

Evapotranspiration (ET) in North Reno County
at Weather Station #1086
December 2010

