



## GMD #2 METERING RULES EFFECTIVE

On August 5, 2011, updated regulations went into effect requiring each non-domestic, non-temporary well in the District to be equipped with a water flowmeter.

The new requirements are included in regulations under the Kansas Water Appropriation Act, K.A.R. 5-22-4a, Water Flowmeter Requirement, and K.A.R. 5-22-4d, Water Flowmeter Installation Procedures.

In order to alleviate financial strains on water right owners and to administer the program with existing staff levels, the deadlines for meter installation are phased-in over a four-year timeframe from 2012 through 2015, depending on which quarter section a well is located:

- All wells in the Northeast quarter of every section located within the District boundaries by December 31, 2012;
- All wells in the Southeast quarter of every section located within the District boundaries by December 31, 2013;
- All wells in the Southwest quarter of every section located within the District boundaries by December 31, 2014; and
- All wells in the Northwest quarter of every section located within the District boundaries by December 31, 2015.

## WATER METER TAMPERING, FALSIFYING WATER USE REPORTS — SERIOUS OFFENSES

Tampering with a water meter, and/or falsifying a water use report, are both Category 3 offenses, as specified by the Division of Water Resources' Rules and Regulations.

Category 3 offenses shall result in a civil penalty of \$1,000 and include:

- Tampering with a water flowmeter or other acceptable water-measuring device;
- Causing a water flowmeter or other acceptable water-measuring device to show an incorrect reading by any method, including any of the following:
  - Altering the propeller;
  - Reversing the water flowmeter; or
  - Running the water flowmeter in reverse by any means.
- Failing to timely install or removing a required water flowmeter or other acceptable water-measuring device;
- Falsifying water use or other data required by the Chief Engineer.

In addition to the civil penalty, a Category 3 offense may result in the modification or the **suspension** of the water right by the Chief Engineer, Division of Water Resources.

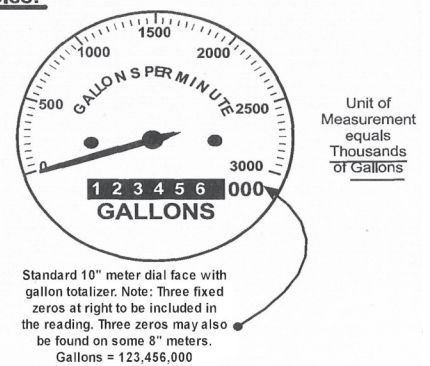
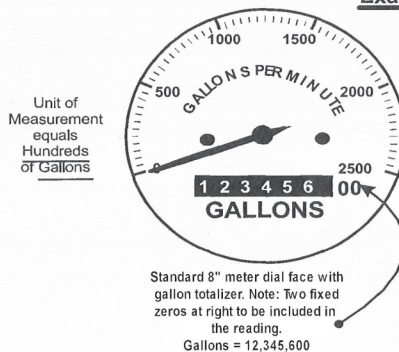
If the authorized well is equipped with a water meter, you must report the beginning and ending water meter readings on the annual Water Use Report. If the well is not equipped with a meter, or the meter malfunctions during the year, you must report the total number of hours pumped and the pumping rate. Falsifying the hours pumped, or rate of diversion, is also a Category 3 offense, as specified above.

## BASIC WATER FLOWMETER INFORMATION

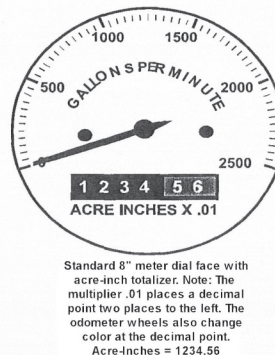
Water flowmeters display various units of measurement. When reporting your water use to the Division of Water Resources on your annual Water Use Report, please be aware of the unit in which your meter reads. Report the beginning and ending readings, along with the net quantity of water pumped, including the unit of measurement.

Knowing how to read your meter and how to convert gallons into acre-feet or acre-inches correctly helps to ensure your Water Use Report is accurate.

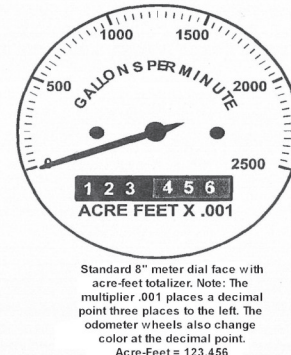
### Examples:



Unit of Measurement equals Acre-Inches  
One Acre-Inch equals 27,154 Gallons



Unit of Measurement equals Acre-Feet  
One Acre-Foot equals 325,851 Gallons



**NOTE:** When calling the District office for assistance, please have your water right/permit number available to expedite the call and to insure you are receiving accurate information.



**EQUUS BEDS GROUNDWATER MANAGEMENT DISTRICT NO. 2**

313 Spruce Street  
Halstead, KS 67056-1924

Phone: 316-835-2224  
Fax: 316-835-2225  
Email: [equusbeds@gmd2.org](mailto:equusbeds@gmd2.org)  
Website: [www.gmd2.org](http://www.gmd2.org)

Mailing Address Line 1  
Mailing Address Line 2  
Mailing Address Line 3  
Mailing Address Line 4  
Mailing Address Line 5

**OR CURRENT RESIDENT**

**Please contact us with any address changes!**

**KANSAS DROUGHT CONTINUES, DROUGHT TERM PERMIT OPTIONS STILL AVAILABLE**

**TOPEKA** — Drought continues in Kansas with nearly three-fourths of the state abnormally to exceptionally dry. The estimated value loss of wheat, corn, sorghum and soybeans in Kansas in 2011 is more than 1.77 billion dollars, based on a comparison of current U.S. Department of Agriculture production estimates and average historic production.

The Kansas Department of Agriculture is offering emergency drought term permits to affected counties, including all of GMD #2.

The one-time, drought-focused term permit allows holders of existing water rights the flexibility to borrow a portion of next year's authorized quantity in order to complete the 2011 growing season.

Additional information about the drought emergency term permits, including application forms, can be found on the Division of Water Resources and GMD #2 websites. Program enrollment ends on December 31, 2011 and water right holders should apply for this program prior to exceeding the quantity of water authorized by their water right(s). There have been 956 drought emergency term permit applications statewide, as of September 29, 2011.

**ANNUAL MEETING INFORMATION**

**37TH ANNUAL MEETING**

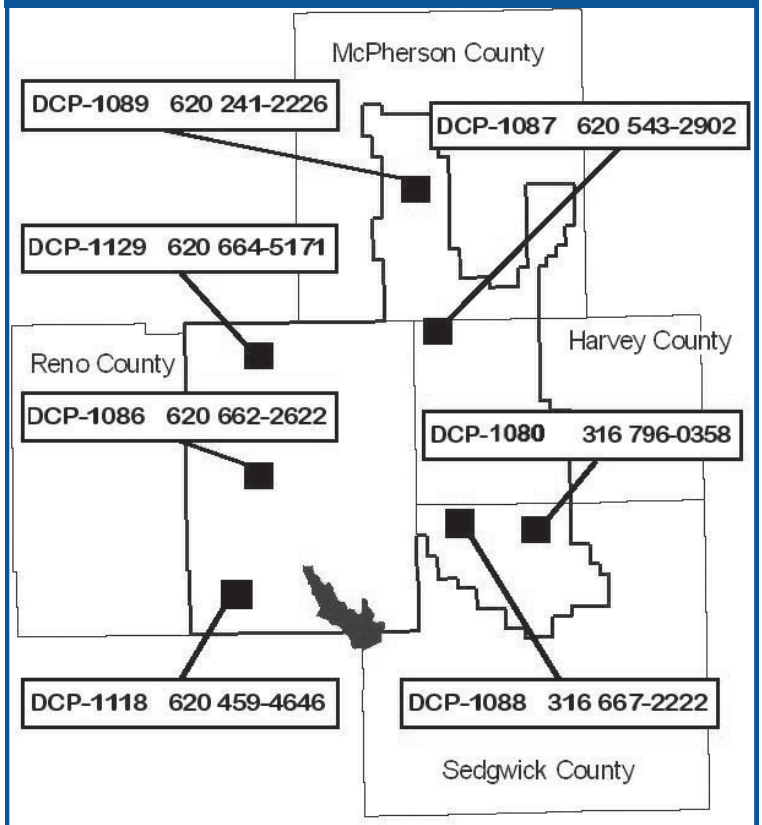
The 37th Annual Meeting of the Equus Beds Groundwater Management District No. 2 will be held on Tuesday, January 10, 2012, in the Halstead Middle School north gymnasium, 221 West 6th Street, in Halstead. Voter registration will begin at 6:15 p.m. in the commons area, with the meeting beginning at 7:00 p.m. Further information, as well as maps to the location, will be posted on the website and also in the January '12 newsletter.

**2012 BOARD ELECTION INFORMATION**

Business to be conducted at the 2012 Annual Meeting will include the election of three director positions to the nine-member Board of Directors. Board terms expiring in 2012 are Dennis Gruenbacher, Sedgwick County; Mike McGinn, Harvey County; and Vin Kissick, Sedgwick County.

Persons interested in running for the Equus Beds Board of Directors must file an application and statement of eligibility with the District by December 09, 2011, or seek nomination at the meeting.

**Need to know the current rainfall, ET, soil temperature, groundwater level, and current atmospheric conditions in the Equus Beds? Simply call the nearest data station.**



**BOARD OFFICERS**

Larry Jacob .....President  
David Stroberg ..... Vice President  
Fred Seiler .....Secretary  
Don Koci .....Treasurer

**BOARD OF DIRECTORS**

Dennis Gruenbacher .....Member  
Joe Pajor.....Member  
Vin Kissick.....Member  
Mike McGinn .....Member  
Bob Seiler .....Member  
Tom Adrian..... Attorney

**DISTRICT STAFF**

Tim Boese .....Manager  
Dorinda Albrecht.....Admin Asst  
Daniel Clement.....Hydrologist  
David Randolph.....Technician

The Equus Beds Groundwater Management District No. 2 publishes the *Equus Beds Groundwater News* quarterly. Subscriptions are free of charge.

**Address corrections are appreciated and help to reduce publication costs.**

Mail, fax or e-mail corrections to the District office at: 313 Spruce Street, Halstead, KS 67056-1924 • Phone: 316-835-2224 • Fax: 316-835-2225 • E-mail: [equusbeds@gmd2.org](mailto:equusbeds@gmd2.org) • website: [www.gmd2.org](http://www.gmd2.org)

Office hours are 8:00 am - 5:00 pm, Monday through Friday, except for holidays.

The Board of Directors meets the second Tuesday of each month. All meetings are open to the public. The public is welcome and encouraged to attend the meetings.